



Lexington-Bluegrass Association of REALTORS®
2250 Regency Road
Lexington, KY 40503

Lexington-Bluegrass Association of REALTORS® announces 36.1 million in 2009 real estate sales for Woodford County

For release: January 28, 2010

Residential real estate sales by members of the Lexington-Bluegrass Association of REALTORS® (LBAR) positively impacted the Woodford County economy in 2009 with 208 reported sales totaling \$36,132,453. Sales continue to be a driving force in the Woodford County economy when considering the multiplier effect on the area of buyers and sellers who purchase appliances, carpet, flooring, landscaping, etc in response to their transaction needs.

Residential sales increased in Woodford County 25% in December 2009 vs. December 2008. The median sales price in Woodford County remained steady, falling just 5% for the same time period and 3% for the year 2009 vs. 2008. Pending listings increased 50% during December 2009 vs. December 2008.

As the region's leading advocate for homeownership, Lexington-Bluegrass Association of REALTORS® understands the value and joy of owning a home. LBAR represents more than 2,300 REALTORS® located in Anderson, Bourbon, Boyle, Clark, Fayette, Franklin, Garrard, Harrison, Jessamine, Madison, Mercer, Montgomery, Scott and Woodford Counties. Visit www.lbar.com or call 859-276-3503 for buying and selling resources and real estate listings. For additional information please contact Elaine Hangis, LBAR executive vice president (859-276-3503 or via e-mail, Elaine@lbar.com).

###



Woodford County Real Estate Market Activity Report

as of December 31, 2009

Contents

Sales Closed.....	2
Median Sales Price.....	3
Average Days on Market.....	4

Next release: January 2010

Contact: Elaine Hangis, LBAR executive vice president

Phone: 859-276-3503

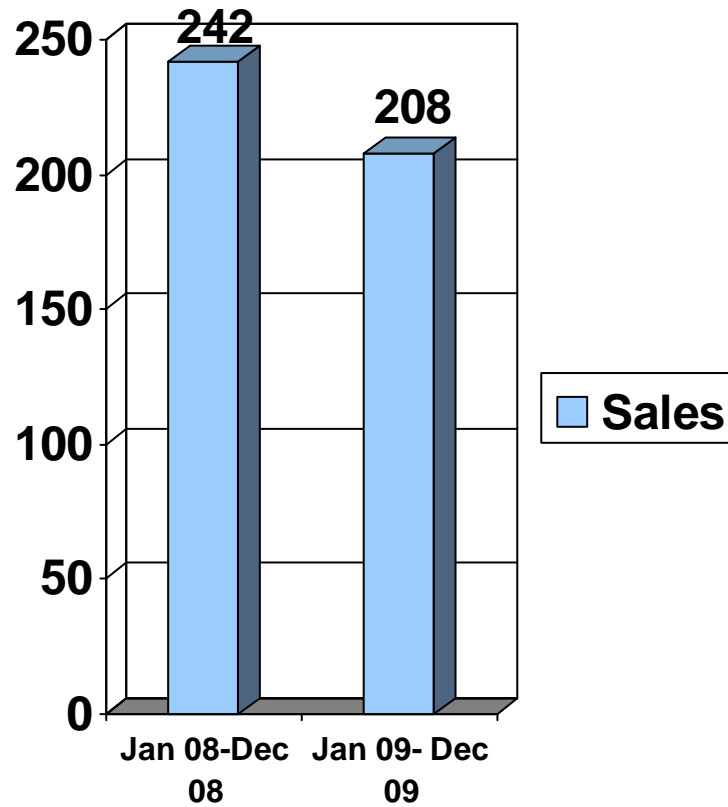
Email: elaine@lbar.com

Woodford Co. Sales Closed

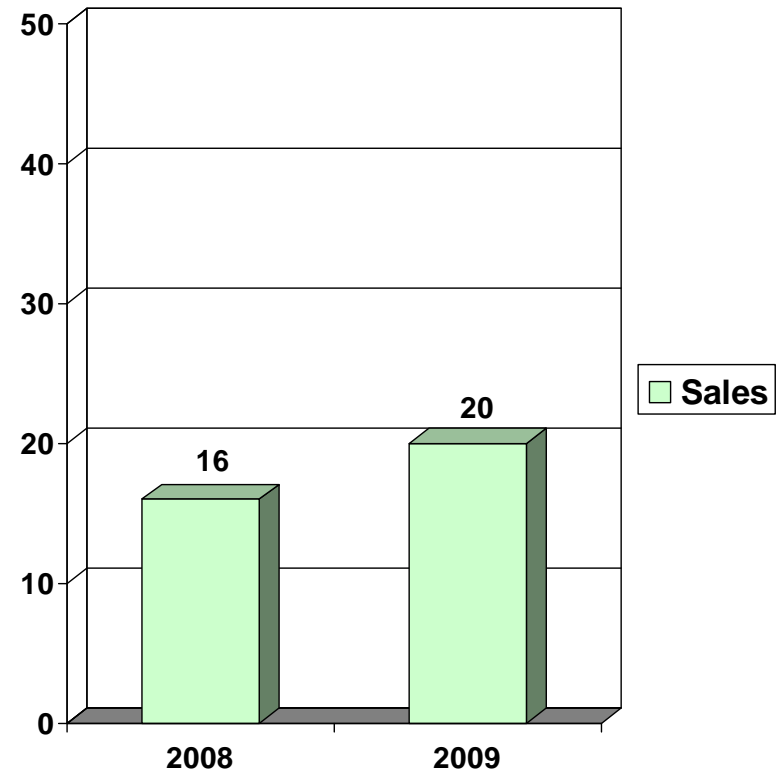


as of December 31, 2009

2008 vs. 2009



Dec. 2008 vs. Dec. 2009

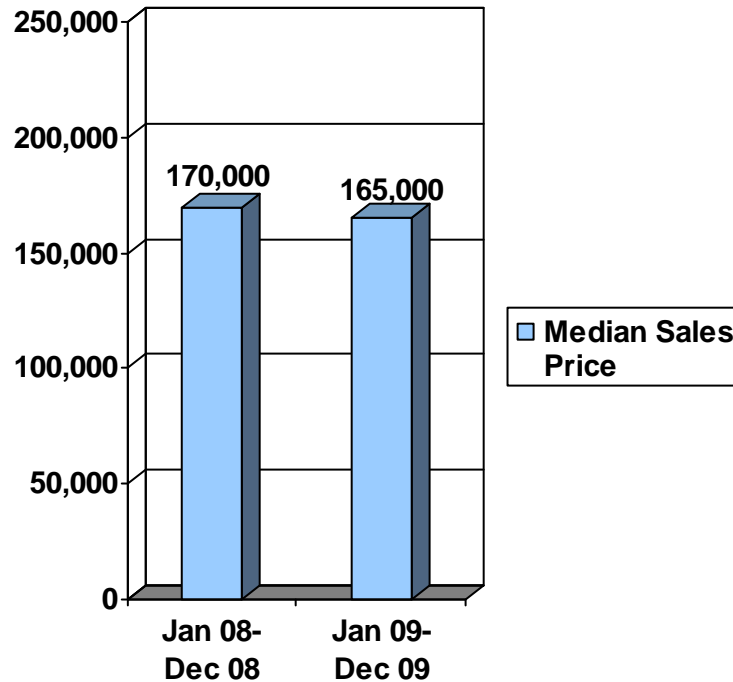


Woodford Co. Median Sales Price

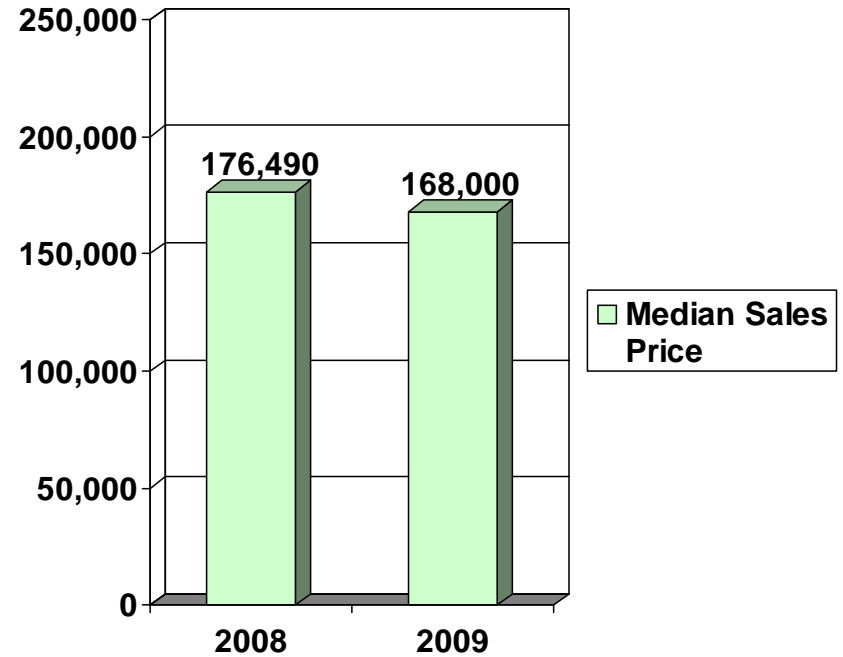


as of December 31, 2009

2008 vs. 2009



Dec. 2008 vs. Dec. 2009

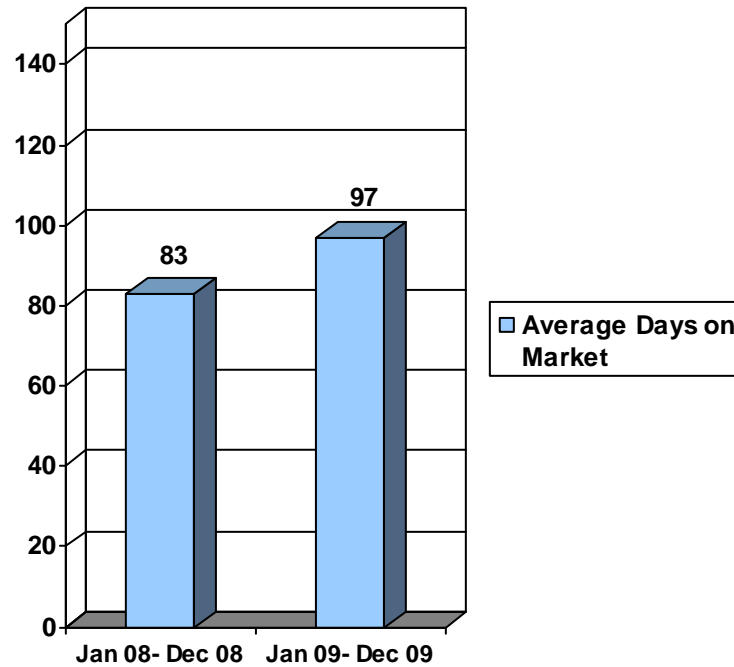


Woodford Co. Average Days on Market

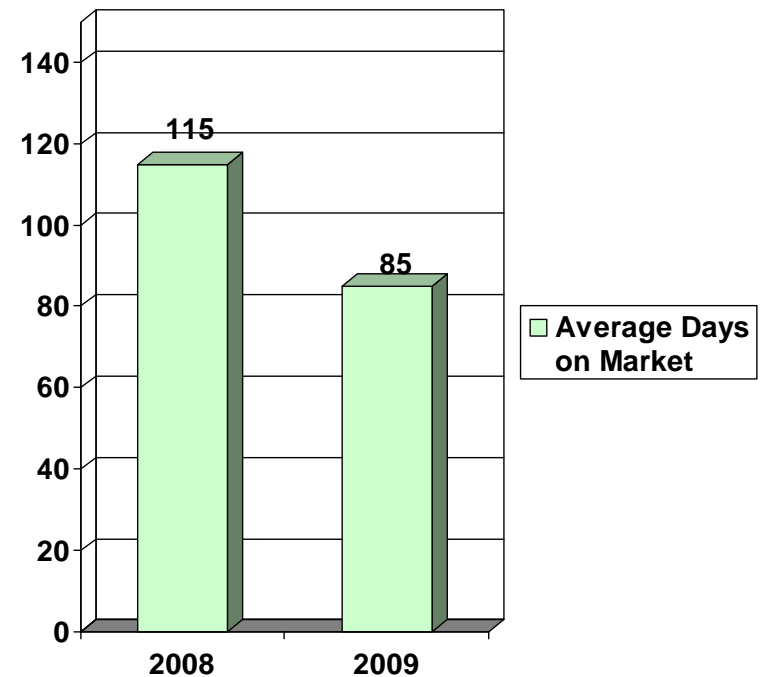
as of December 31, 2009



2008 vs. 2009



Dec. 2008 vs. Dec. 2009



Published by the Lexington-Bluegrass Association of REALTORS®. This data is based exclusively upon LBAR MLS activity in Woodford County.