



Lexington-Bluegrass Association of REALTORS®  
2250 Regency Road  
Lexington, KY 40503

## **Lexington-Bluegrass Association of REALTORS® announces \$723.9 million in 2009 real estate sales for Fayette County**

For release: January 28, 2010

Residential real estate sales by members of the Lexington-Bluegrass Association of REALTORS® (LBAR) positively impacted the Fayette County economy in 2009 with 3,926 reported sales totaling \$723,927,067. Sales continue to be a driving force in the Fayette County economy when considering the multiplier effect on the area of buyers and sellers who purchase appliances, carpet, flooring, landscaping, etc in response to their transaction needs.

Residential sales rose 13% in Fayette County in December 2009 vs. December 2008. Median sales prices in Fayette County remained stable for the year, falling only 4% in 2009 vs. 2008, and increasing 1% in December 2009 vs. December 2008. Average days on market also fell 3% for 2009 and 20% in December 2009 vs. December 2008. Fayette County also saw a 15% decrease in months of inventory from 10.5 to 8.9. This is a positive indicator, a balanced market contains 5-6 months of inventory.

As the region's leading advocate for homeownership, Lexington-Bluegrass Association of REALTORS® (LBAR) understands the value and joy of owning a home. LBAR represents more than 2,000 REALTORS® located in Anderson, Bourbon, Boyle, Clark, Fayette, Franklin, Garrard, Harrison, Jessamine, Madison, Mercer, Montgomery, Nicholas, Powell, Scott and Woodford Counties. Visit [www.lbar.com](http://www.lbar.com) or call 859-276-3503 for buying and selling resources and real estate listings.

###



# Fayette County Real Estate Market Activity Report

as of Dec. 31, 2009

## Contents

Sales Closed.....	2
Median Sales Price.....	3
Average Days on Market.....	4

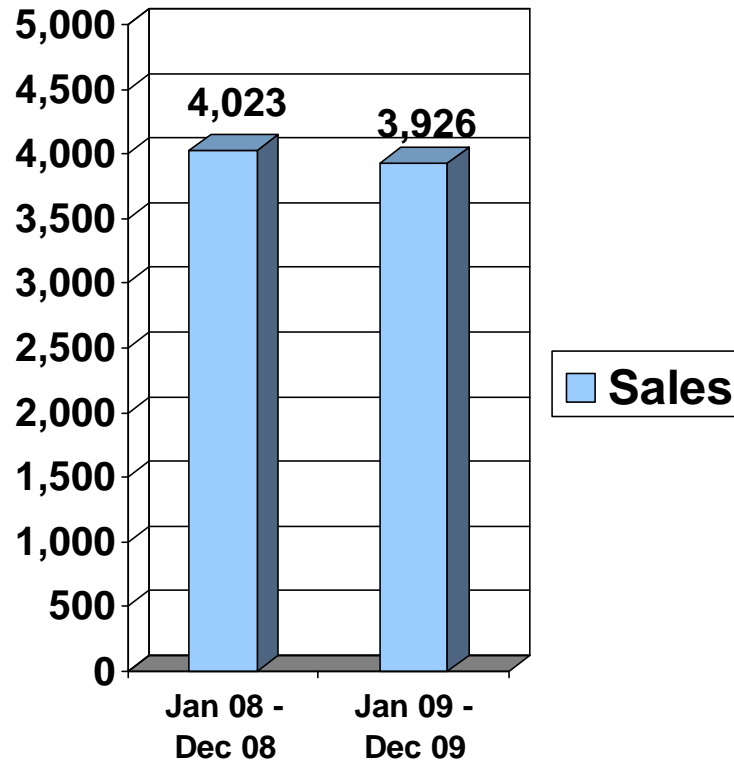
*Next release: January 2010*  
*Contact: Elaine Hangis, LBAR executive vice president*  
*Phone: 859-276-3503*  
*Email: [elaine@lbar.com](mailto:elaine@lbar.com)*

# Fayette Co. Sales Closed

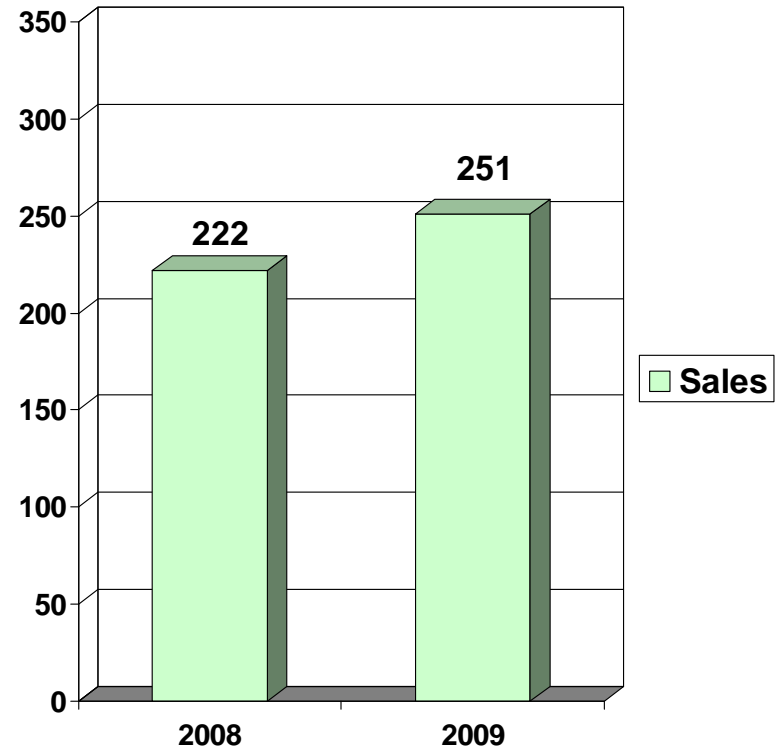
as of Dec. 31, 2009



### 2008 vs. 2009



### Dec. 2008 vs. Dec. 2009

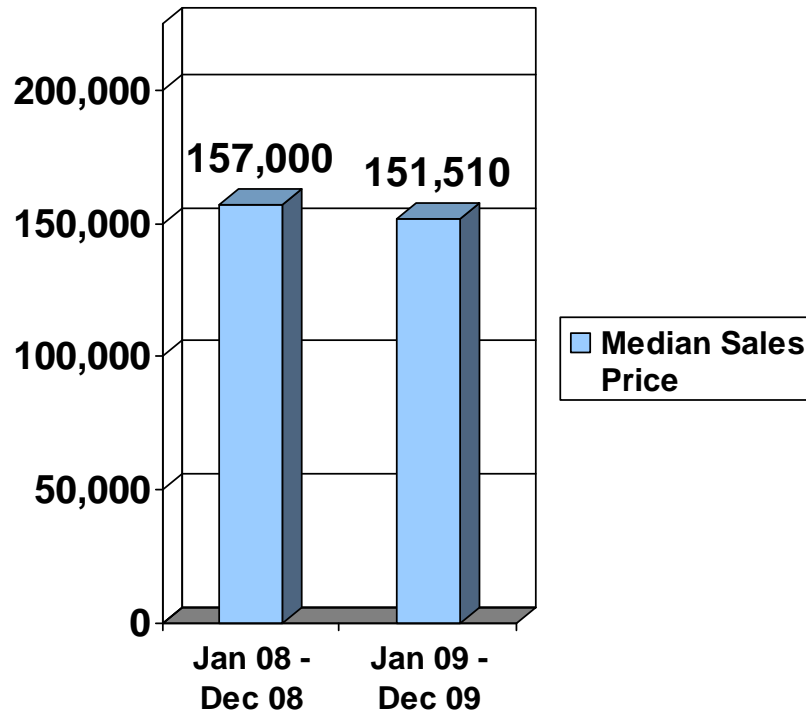


# Fayette Co. Median Sales Price

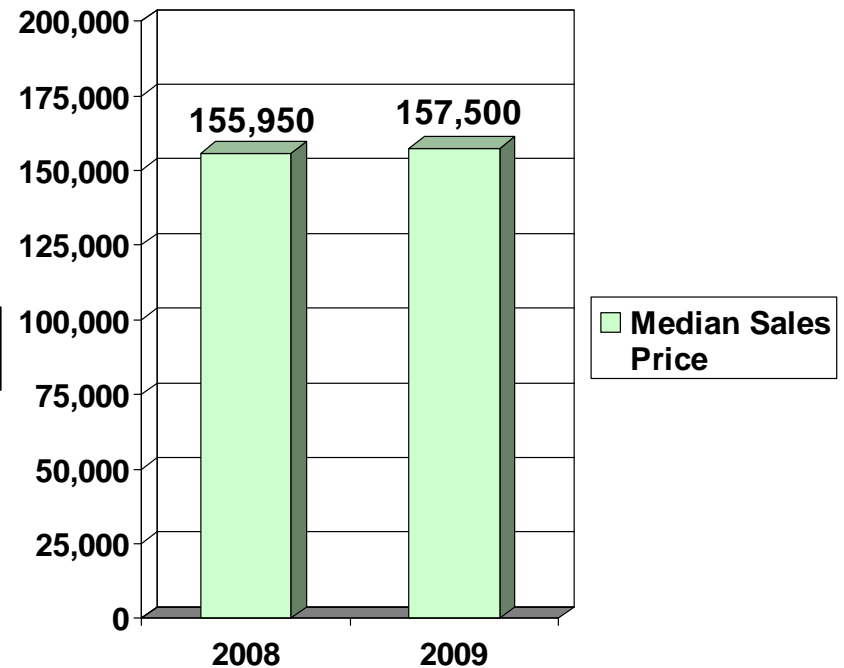
as of Dec. 31, 2009



### 2008 vs. 2009



### Dec. 2008 vs. Dec. 2009

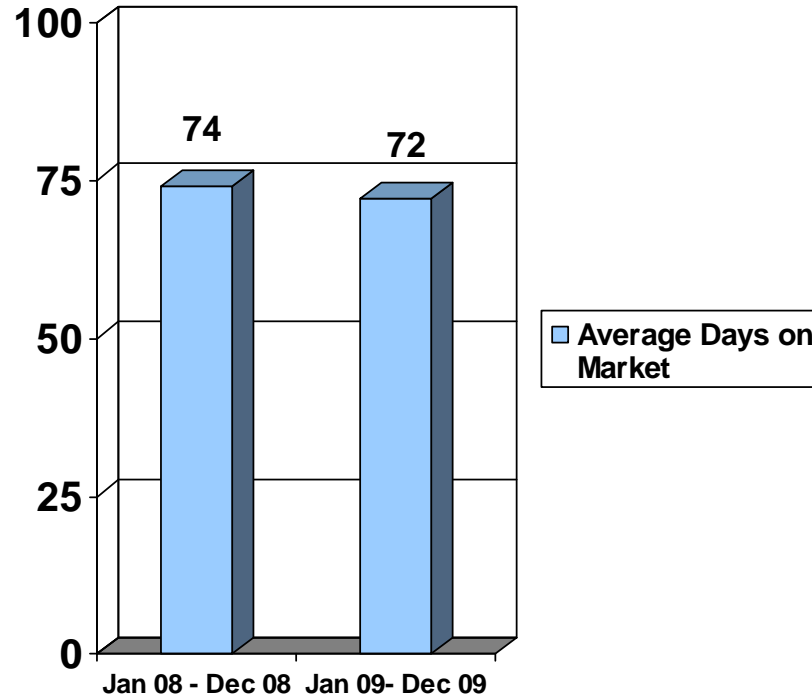


# Fayette Co. Average Days on Market

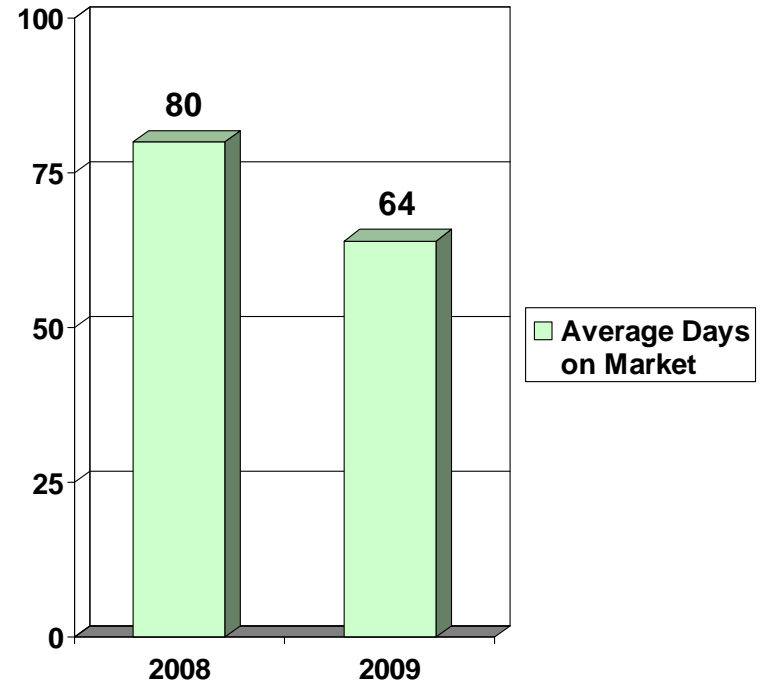
as of Dec. 31, 2009



### 2008 vs. 2009



### Dec. 2008 vs. Dec. 2009



Published by the Lexington-Bluegrass Association of REALTORS®. This data is based exclusively upon LBAR MLS activity in Fayette County.